

# RSAC

**September 2, 2016**

# *Recreational Services*

---

## **Agenda**

- Introductions
- Selection of Chair and Vice Chair
- Johnson Center Expansion and Renewal Updates
- Recreational Services Program Updates
- Johnson Center Updates
- Financial Updates
- SFRB Preview
- Constituent Reports
- Other Business
- **Next RSAC March 25, 2016 at 12 pm**



# Introductions

Members

Guests



The image part with relationship ID rid2 was not found in the file.

# Recreational Services

---

## RSAC Membership

Constituent Group	Represented By	Status
GPSA President	Nick Schelerth	Designate
GPSA At-Large	Kelly Johnson	
ASUNM President	Kyle Biederwolf	
ASUNM Senate	Sydney O'Connell	
ASUNM At-Large		
Residence Life		
Staff Council	Cindy Garcia	
Faculty Senate	Todd Seidler	
VP Student Affairs	Greg Golden	Designate
Student Affairs At-Large	Tim Gutierrez	
Alumni	Terry Linton	
ARC	Amanda Butrum	Consultant, Non-Voting
Rec Svcs	Jim Todd	Ex-Officio, Non-Voting



The image part with relationship ID rid2 was not found in the file.



# Election

Chair

Vice Chair



The image part with relationship ID rid2 was not found in the file.

# Johnson Center

## Expansion & Renewal Project



# Update



The image part with relationship ID rid3 was not found in the file.

# *Recreational Services*

---

## **JCER Committee Members**

### **President's Office**

Kevin Stevenson

### **Academic Affairs**

Melissa Vargas

### **ISS**

Lisa Marbury

### **PDC**

Amy Coburn

Rick Henrard

Scott Cunningham

Ben Savoca

### **PPD**

Robert Notary

David Penasa

Michael McCord

### **COE**

David Scott

Todd Seidler

### **Recreational Services**

Tim Gutierrez

Jim Todd

### **Staff**

Tracey Briggs

### **ARC**

Joan Green

### **Students**

Kyle Biederwolf

Justin Cooper

Edria Mithcem

Mark Orgeron

### **IT**

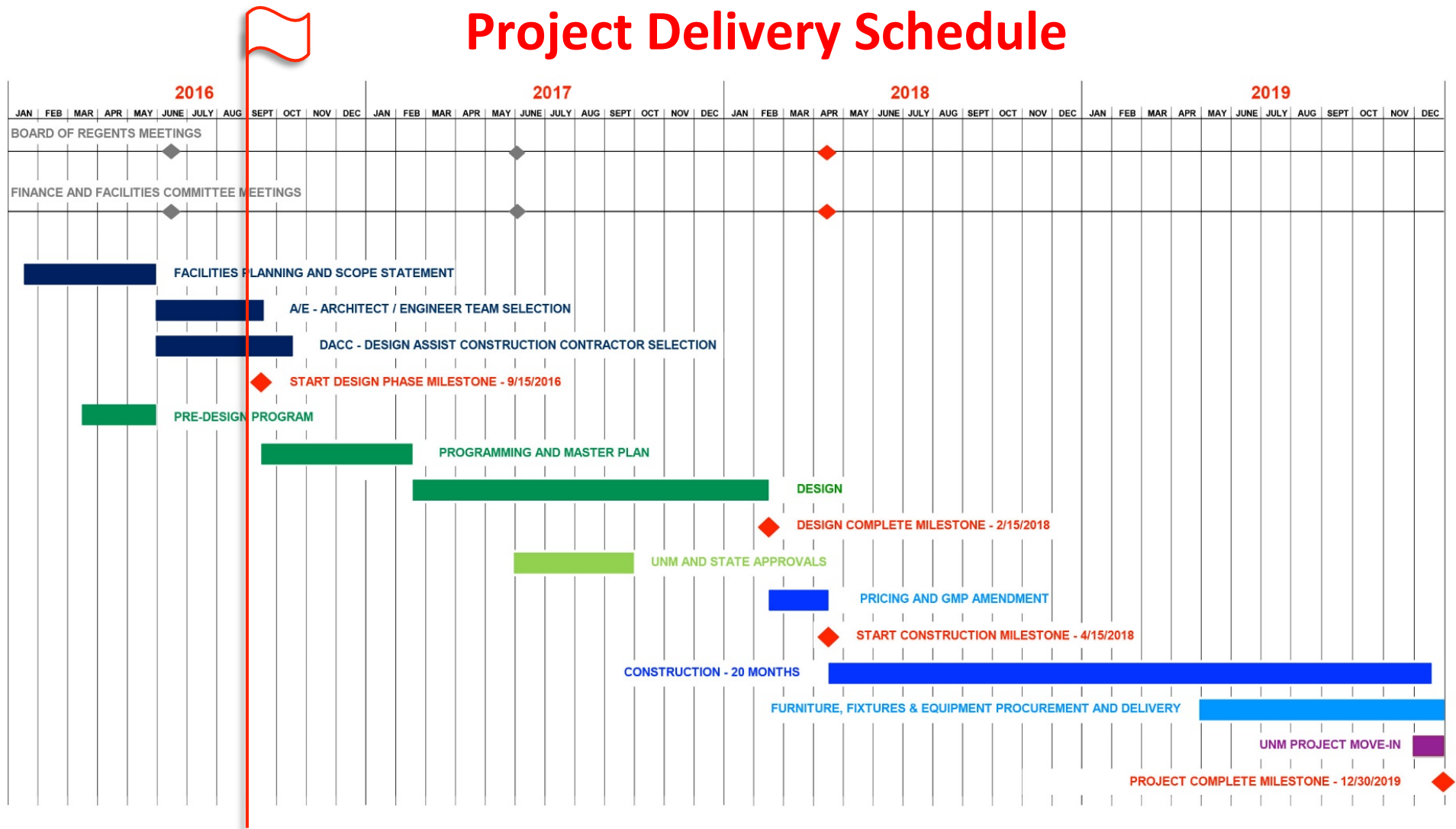
Ricardo Javier Cue

Moira Gerety

### **Athletics**

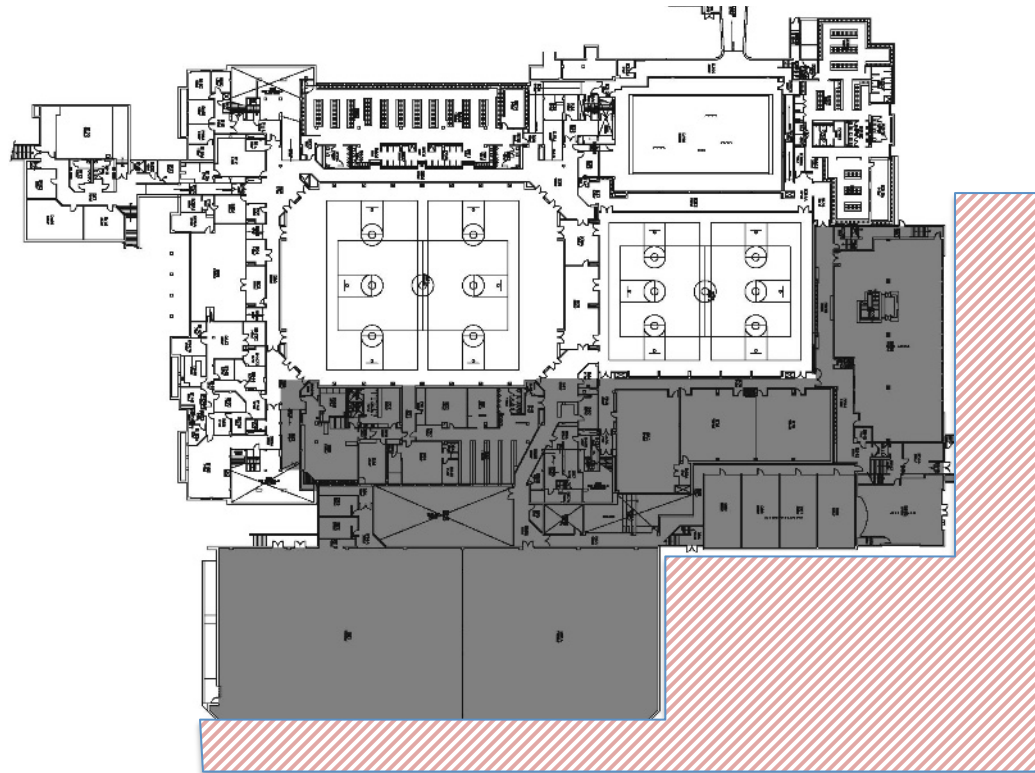
Scott Dotson

# Recreational Services



# *Recreational Services*

## Targeted Areas for Renovation and Expansion

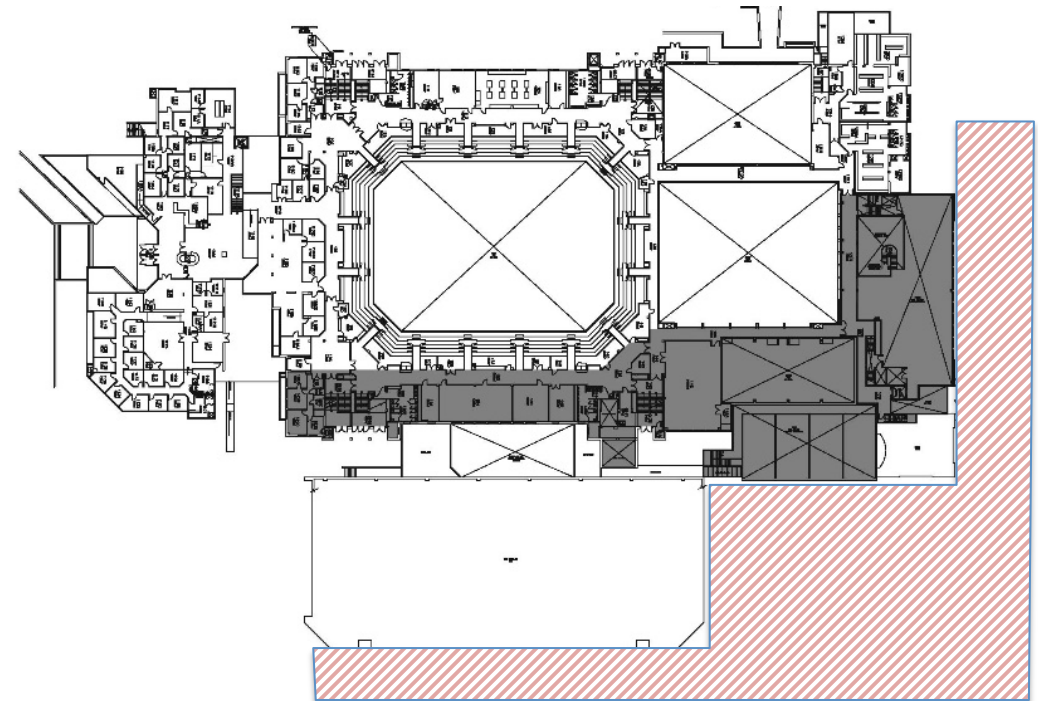


**BASEMENT**

SCALE: NOT TO SCALE



NORTH



**FIRST FLOOR**

SCALE: NOT TO SCALE



NORTH



The image part with relationship ID rid2 was not found in the file.

# *Recreational Services*

---

## **New Amenities and Features**

### **Rock Climbing and Bouldering**

Weight Training and Cardio

Multi-Activity Court (MAC)

Multi-Purpose Rooms

Indoor Running Track

Open Atrium Lobby & Social Space

South Gym Enhancements

Universal Facilities

Outdoor & Bicycle Shop

Locker Rooms



The image part with relationship ID rid2 was not found in the file.



# *Recreational Services*

---

## **New Amenities and Features**

Rock Climbing and Bouldering

### **Weight Training and Cardio**

Multi-Activity Court (MAC)

Multi-Purpose Rooms

Indoor Running Track

Open Atrium Lobby & Social Space

South Gym Enhancements

Universal Facilities

Outdoor & Bicycle Shop

Locker Rooms



The image part with relationship ID rid2 was not found in the file.

# *Recreational Services*

---

## **New Amenities and Features**

Rock Climbing and Bouldering

Weight Training and Cardio

**Multi-Activity Court (MAC)**

Multi-Purpose Rooms

Indoor Running Track

Open Atrium Lobby & Social Space

South Gym Enhancements

Universal Facilities

Outdoor & Bicycle Shop

Locker Rooms



The image part with relationship ID rid2 was not found in the file.



# *Recreational Services*

---

## **New Amenities and Features**

Rock Climbing and Bouldering

Weight Training and Cardio

Multi-Activity Court (MAC)

### **Multi-Purpose Rooms**

Indoor Running Track

Open Atrium Lobby & Social Space

South Gym Enhancements

Universal Facilities

Outdoor & Bicycle Shop

Locker Rooms



# *Recreational Services*

---

## **New Amenities and Features**

Rock Climbing and Bouldering

Weight Training and Cardio

Multi-Activity Court (MAC)

Multi-Purpose Rooms

### **Indoor Running Track**

Open Atrium Lobby & Social Space

South Gym Enhancements

Universal Facilities

Outdoor & Bicycle Shop

Locker Rooms



The image part with relationship ID rid2 was not found in the file.

# *Recreational Services*

---

## **New Amenities and Features**

Rock Climbing and Bouldering

Weight Training and Cardio

Multi-Activity Court (MAC)

Multi-Purpose Rooms

Indoor Running Track

### **Open Atrium Lobby & Social Space**

South Gym Enhancements

Universal Facilities

Outdoor & Bicycle Shop

Locker Rooms



The image part with relationship ID rid2 was not found in the file.



# *Recreational Services*

---

## **New Amenities and Features**

Rock Climbing and Bouldering

Weight Training and Cardio

Multi-Activity Court (MAC)

Multi-Purpose Rooms

Indoor Running Track

Open Atrium Lobby & Social Space

South Gym Enhancements

Universal Facilities

## **Outdoor & Bicycle Shop**

Locker Rooms



The image part with relationship ID rid2 was not found in the file.

# *Recreational Services*

---

## **New Amenities and Features**

Rock Climbing and Bouldering

Weight Training and Cardio

Multi-Activity Court (MAC)

Multi-Purpose Rooms

Indoor Running Track

Open Atrium Lobby & Social Space

South Gym Enhancements

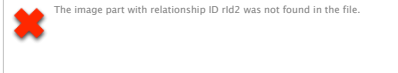
Universal Facilities

Outdoor & Bicycle Shop

## **Locker Rooms**



# Program Updates

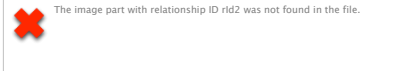


# *Recreational Services*

---

## Highlights

- **Fitness Program**
  - Personal Training eligible for Tuition Remission
  - Upgrades to W.O.W. Program
- **Getaway Adventures**
  - International Trips!
  - Partner with G.E.O.
- **Intramural Sports**
  - New Scoreboards \*\*\*
- **Facility**
  - GoBoardPro \*\*\*
- **Challenge Course Program**
  - New Leadership
    - Betsy Fulreader
    - Jesse Yelvington
  - New Facilitators
  - New Shade Structure December 2016
- **Outdoor & Bicycle Shop**
  - New Rental Bicycles
- **Customer Service**
  - Lockers
  - Equipment Issue



# *Recreational Services*

---

## **Assessment - BIRS**

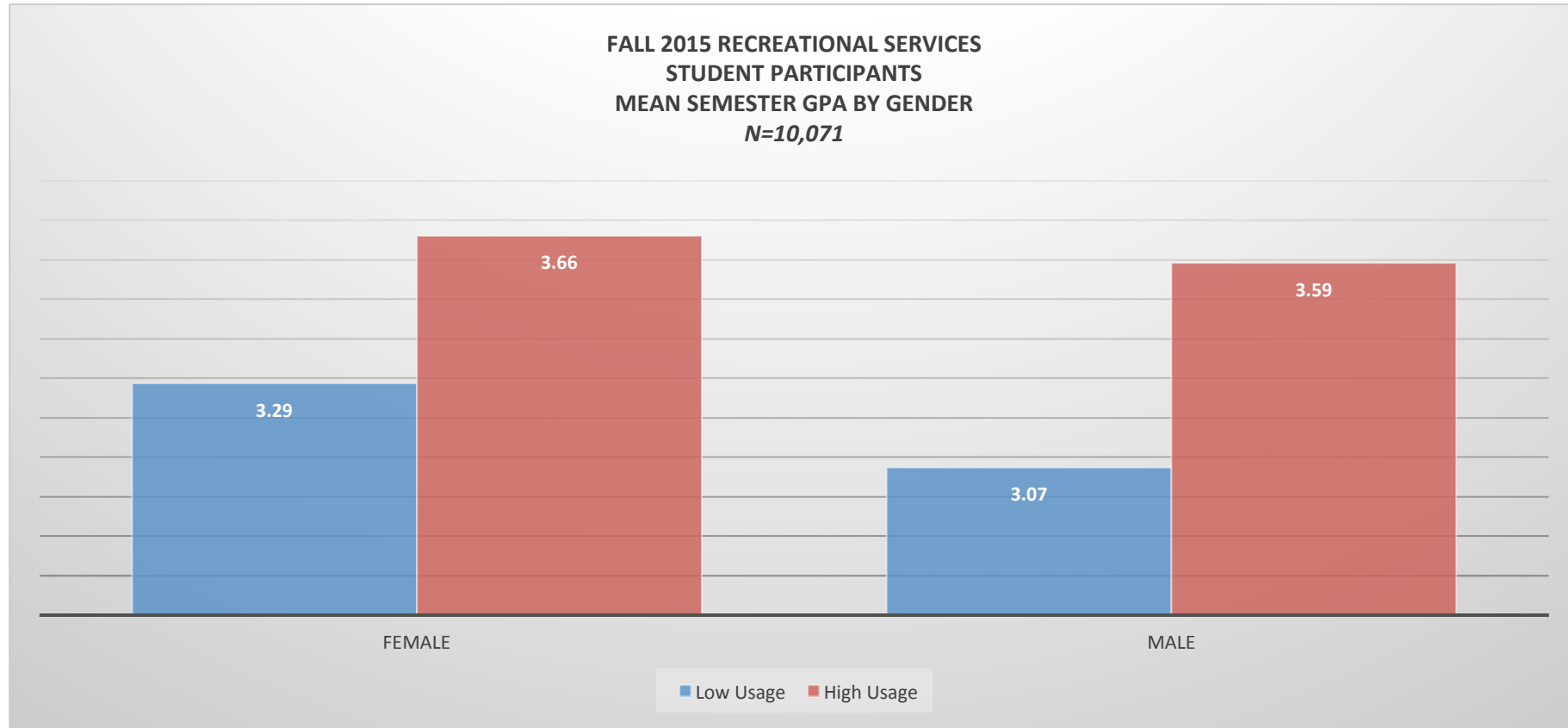


The image part with relationship ID rid2 was not found in the file.



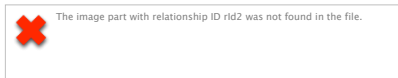
# Recreational Services

## Assessment - BIRS



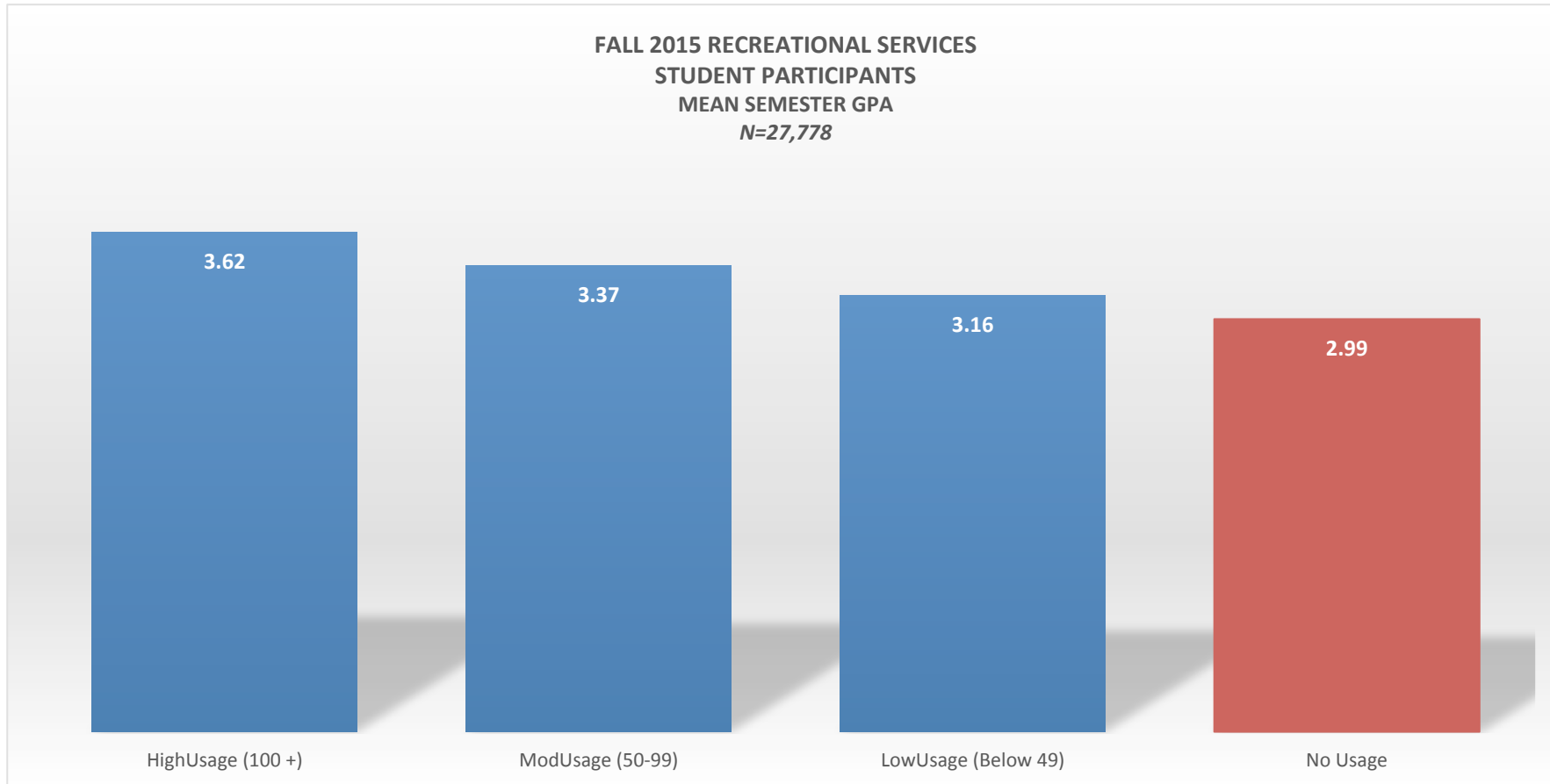
Evaluation Model Only

[https://myreports.unm.edu/ibi\\_apps/bip/portal/BIRS](https://myreports.unm.edu/ibi_apps/bip/portal/BIRS)



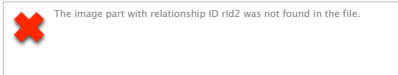
# Recreational Services

## Assessment - BIRS



Evaluation Model Only

[https://myreports.unm.edu/ibi\\_apps/bip/portal/BIRS](https://myreports.unm.edu/ibi_apps/bip/portal/BIRS)



# *Recreational Services*

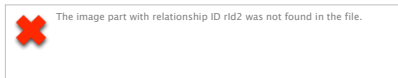
---

## **Assessment - BIRS**

This is not evidence of actual cause and effect of going to Johnson Center more, but based on our analyses, we found that there is statistically significant differences in GPA's of students who go to the Center more. What does this tell us?

We need to do more analyses on parsing out the effects of class based visits vs actual recreational engagement as we haven't controlled for confounding variables.

Regardless if they are attending a fitness, wellness or recreational class, intramurals, or just open recreation, there is a strong relationship with going to the center more and higher GPA.

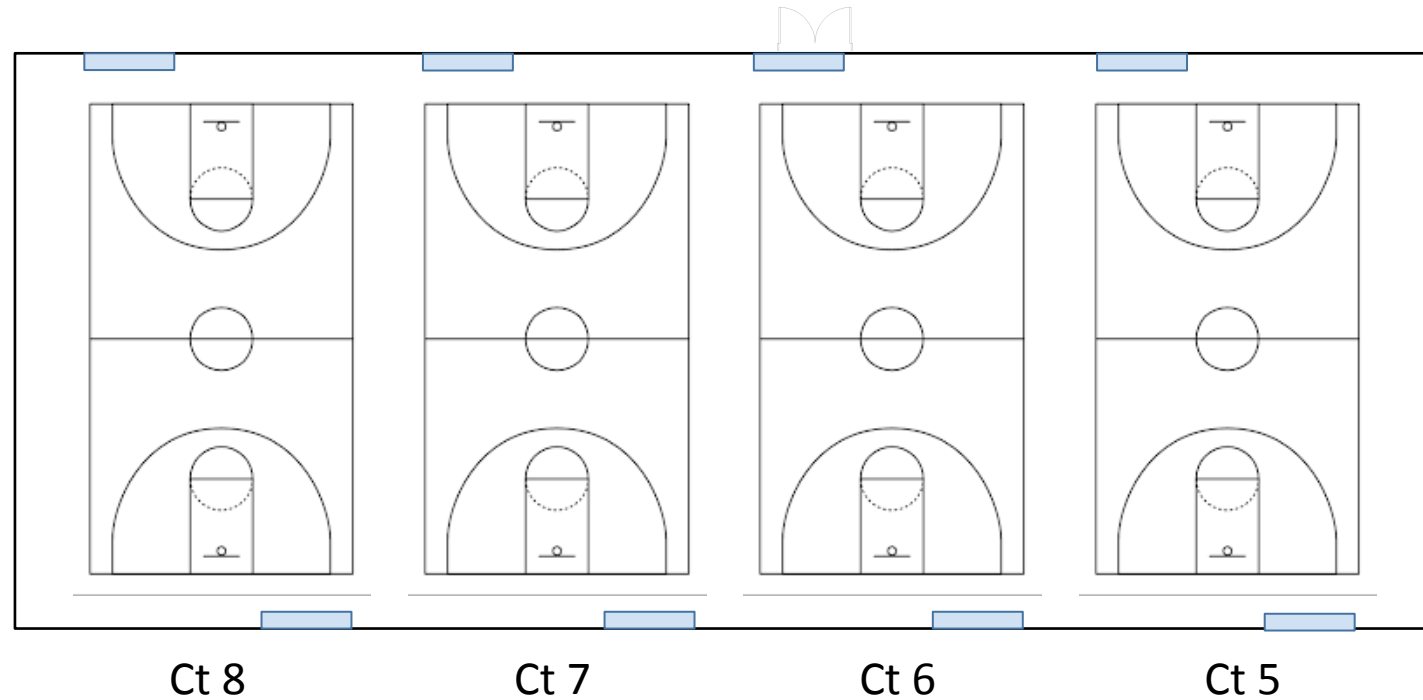


# *Recreational Services*

---

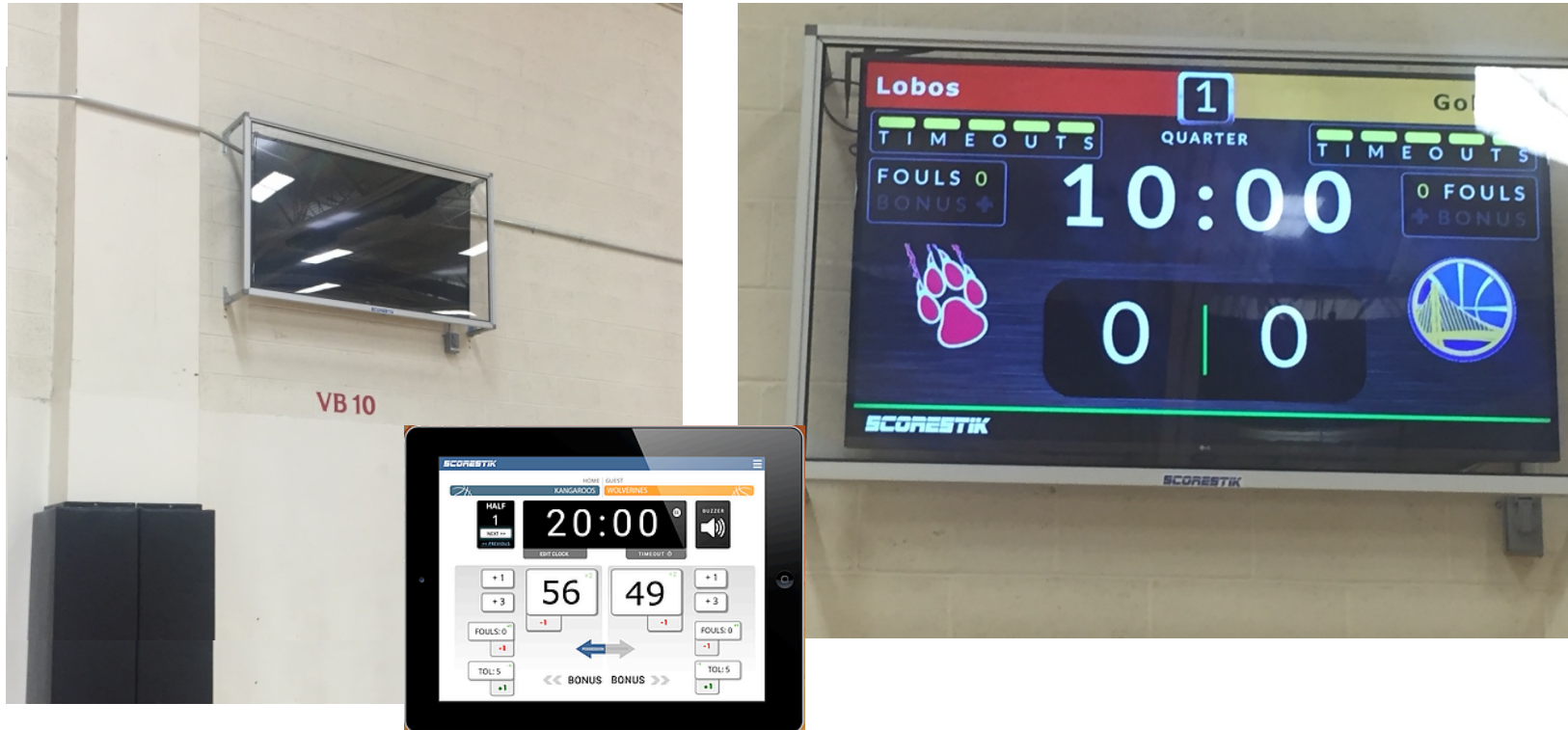
## Scoreboards

South Gym



# Recreational Services

## Scoreboards



The image part with relationship ID rid2 was not found in the file.

# Johnson Center Updates



The image part with relationship ID rid2 was not found in the file.

# *Recreational Services*

---

## **Rubber Matting/Flooring**



## **Tournament Boards**



The image part with relationship ID rid2 was not found in the file.



# *Recreational Services*

---

## **Weight Training**



## **Weight Training**



The image part with relationship ID rid2 was not found in the file.



# Financial Updates

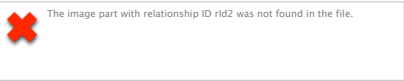
# *Recreational Services*

---

## **Financial Report**

### **Student Fee Review Board Final Recommendations**

Request	\$850,704	
Recommendation	\$837,704	
Difference	<b>\$13,000</b>	↔ 1.5% Holdback



# *Recreational Services*

---

## **Financial Report**

### **I & G Funds Custodial and Facility Tech Salaries**

Request                      \$508,993

Actual                        \$481,173

Difference                  **\$27,820**      5% Holdback

# *Recreational Services*

---

## **Budget F.Y. 2016 - 2017**

Ending Balance	<b>\$27,931</b>
Bookkeeping (revenue)	\$33,298
Actual Carry Forward	\$5,367

# Recreational Services

---

## Budget F.Y. 2016 - 2017

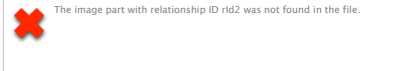
Ending Balar
Bookkeeping
Actual Carry

\$27,931
\$33,298
\$5,367



The image part with relationship ID rid2 was not found in the file.

# SFRB Preview



# Recreational Services

---

## SFRB Request for 2017 - 2018

REVENUE	
SFRB	\$850,704
Internal	
I & G	
Payroll Tax	
ER&R	
Facility Rental	
TOTAL	\$850,704

EXPENSES	
RS Salaries	
JC Salaries	
Student Salaries	\$624,002
Fringe	
O & M	\$226,702
Equip, Sups, Svcs	
TOTAL	\$850,704

# Recreational Services

## SFRB Request for 2017 - 2018

Same as last year, and the year before that, and the year before that, and.....

REVENUE	
SFRB	\$850,704
Internal	
I & G	
Payroll Tax	
ER&R	
Facility Rental	
TOTAL	\$850,704

EXPENSES	
RS Salaries	
JC Salaries	
Student Salaries	\$624,002
Fringe	
O & M	\$226,702
Equip, Sups, Svcs	
TOTAL	\$850,704



# Recreational Services

## SFRB Request for 2017 - 2018

REVENUE	
SFRB	\$850,704
Internal	
186	
186	
186	
186	
186	
TOTAL	\$850,704

Total O&M charged to  
Recreational Services  
is ~ \$340,000.

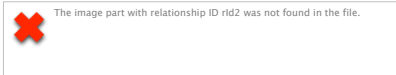
EXPENSES	
RS Salaries	
JC Salaries	
Student Salaries	\$624,002
Fringe	
O & M	\$226,702
Equip, Sups, Svcs	
TOTAL	\$850,704

# *Recreational Services*

---

## **SFRB Request for 2017 - 2018**

Student Salaries: \$624,002		
Lifeguards		\$180,000
Gym Attendants		\$400,000
Customer Service		\$20,000
Sports Officials		\$24,002
Fitness Instructors		\$0
Outdoor Shop		\$0
Challenge Course		\$0
Getaway		\$0
Total		\$624,002



# Constituent Reports

# Other Business



The image part with relationship ID rid2 was not found in the file.

# NEXT RSAC

# October 28, 2016

Bye!

Everyone's a Lobo!

Woof! Woof! Woof!



The image part with relationship ID rid2 was not found in the file.